

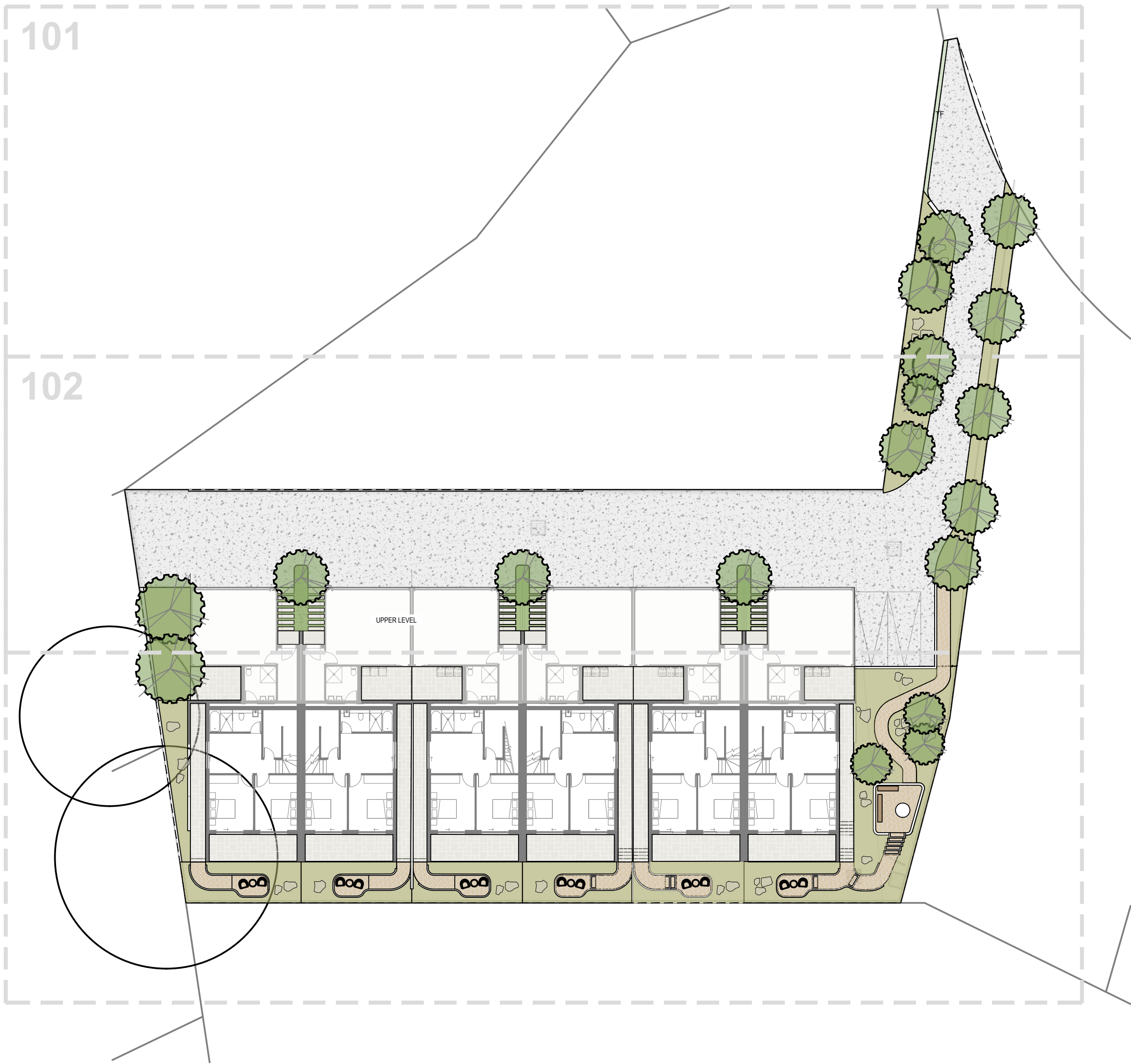
PROPOSED RESIDENTIAL DEVELOPMENT

7 HANLEY PLACE, YASS (1837) NSW 2582

DRAWING SCHEDULE

DRAWING NO.	DRAWING TITLE
000	COVER SHEET
001	LEGEND + NOTES
011	MATERIAL IMAGERY
021	PLANTING IMAGERY
022	PLANT SCHEDULE
101	GENERAL ARRANGEMENT SHEET 1 OF 2
102	GENERAL ARRANGEMENT SHEET 2 OF 2
201	PLANTING PLAN SHEET 1 OF 2
202	PLANTING PLAN SHEET 2 OF 2
301	LANDSCAPE DETAILS

CONTEXT



7 Hanley Pl, Yass (1837) NSW 2582
DEVELOPMENT APPLICATION



PREPARED BY CYRUS RADMEHR
CLIENT BRENDAN PRICE
ARCHITECT SN ARCHITECTS

DATE 03/03/2025
SCALE 1:250@A1
ISSUE B

Copyright is retained by Merdasstone Pty Ltd. Use only the specified dimensions; any additional measurements must be confirmed and provided by the landscape architect. Report any discrepancies to the project manager and Merdasstone Pty Ltd before commencing construction. Ensure adherence to the Building Code of Australia and all applicable Australian Standards and regulatory requirements.

<div>GENERAL INFORMATION</div> <div><div><div></div><div></div><div></div></div>BLOCK BOUNDARY</div> <div>GRADING</div> <div><div>+514.58</div><div>RELATIVE LEVEL Level relative to Architectural FFL per floor</div></div>	<div>HARDWORKS</div> <div><div><div>P1</div><div>PAVING TYPE 1 - DRIVEWAY PAVING Concrete, light grey, Refer to Civil Drawings</div></div><div><div>P2</div><div>PAVING TYPE 2 - STEPPING STONES Stepping Travertine, nom 1200x300mm. Steps are 150mm apart to allow plants to grow inbetween</div></div><div><div>P3</div><div>PAVING TYPE 3 - DECO Compacted Crushed Granite, mix cement at a ratio of 8 Deco:1 Cement to Stabilise Mix</div></div><div><div>P4</div><div>PAVING TYPE 4 - TRAVERTINE PAVERS French Pattern Travertine Pavers, Size Varies</div></div><div><div><div>ST1</div><div></div></div><div>STAIRS TYPE 1 - TIMBER STARS Timber 100mm Battens Filled With Crushed Granite</div></div><div><div><div>ST2</div><div></div></div><div>STAIRS TYPE 2 - STONE CLADDING STEPS Travertine Pavers Cladding</div></div><div><div><div>BLDR</div><div></div></div><div>BOULDERS TYPE 1 - EXISTING BOULDERS Site Found Boulders to be reclaimed and reused</div></div></div> <div><div>WALLS, FENCES & EDGES</div><div><div><div>W1</div><div></div></div><div>RETAINING WALL TYPE 1 - Concrete Block Wall with Cladding Nom 180mm W x Vaires H</div></div><div><div><div>E1</div><div></div></div><div>EDGE TYPE 1 - Natural Block Sone Edge Varies Height, Flush with deco</div></div><div><div><div>FE1</div><div></div></div><div>FENCE TYPE 1 - SCREENING FENCE Corten Vertical Slat Fence</div></div></div>	<div>FURNITURE, STRUCTURES & EQUIPMENT</div> <div><div><div>F1</div><div>PROPRIETARY FURNITURE TYPE 1: Recycled Timber Benches 450mmx450mm</div></div><div><div>F2</div><div>PROPRIETARY FURNITURE TYPE 2: Outdoor BBQ and Fire Buschbeck 3-in-1 Outdoor BBQ, Pizza Oven, and Fireplace Built-in</div></div><div><div>F3</div><div>CUSTOM FURNITURE TYPE 3:Outdoor Table and Chair Set Jak & Jil Setting in 'Jasper' textured powder coat, Jak Seat Pad in Westbury Madagascar 'Granite' outdoor fabric.</div></div><div><div>F4</div><div>CUSTOM FURNITURE TYPE 4:Custom made Mail box, Stone Bricks and Black Marble</div></div></div> <div><div>SOFTWARES</div><div><div><div></div><div>TREE PLANTING Refer Plant Schedule</div></div><div><div>TF</div><div>TURF Refer Local Council's specified turf</div></div><div><div>P</div><div>GENERAL PLANTING Refer Planting Plan + Plant Schedule</div></div></div><div><div>PLANTING PLAN</div><div><div><div>PL1</div><div>PLANTING TYPE 1: Groundcover, native + exotic, massed Setout: Species grouped in areas of 4-7 plants to achieve mixed mass planting.</div></div><div><div>PL2</div><div>PLANTING TYPE 2: Shrubs, Native, Massed Setout: Species grouped in areas of 2-7 plants to achieve mixed mass planting.</div></div><div><div>PL3</div><div>PLANTING TYPE 3: Accent Setout: Groundcover and shrub species grouped in areas of 3-5 plants, interspersed with informally located groups of 2-3 grasses and shrubs.</div></div><div><div>PL4</div><div>PLANTING TYPE 4: Low Shrubs and Groundcover, Native + Exotic, Massed Setout: Species grouped in areas of 3-6 plants to achieve mixed mass planting.</div></div></div></div></div>	<div>Note:</div> <div>Due to site constraints, achieving the required 40% landscaping is not feasible. The site includes a 33-meter-long by 7 meters wide driveway, covering 185 square meters, which significantly impacts the available landscaping area. Despite our efforts to maximise green space, the total landscaping currently reaches 32%, leaving an 8% shortfall.</div> <div>Given the necessity of the driveway for site access, we respectfully request a waiver for the remaining 8% and approval of the proposed design. This adjustment ensures functional access while still prioritizing landscaping to the greatest extent possible.</div>
--	---	--	---



P1: Concrete Paving, Light Gray



P2: Light Cream Travertine Stepping Stone
1200mmx300mm Opened by 150mm



P3: Compact crushed gravel path with a natural finish



P4: Travertine Stepping Stone, French Pattern



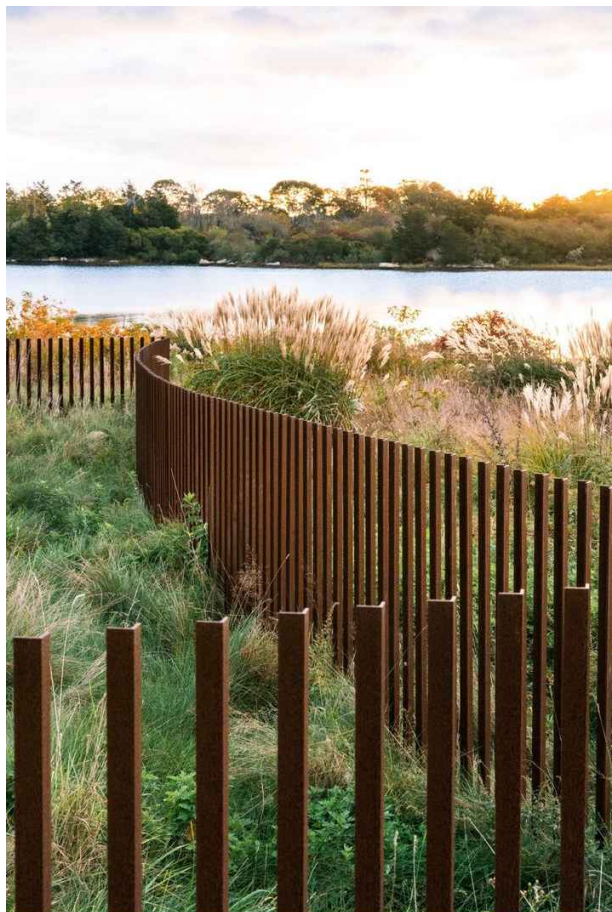
E1: Block Stone Edge



E2: Timber Edge Around Steps



W1: Stone Retaining wall



FE1: Corten Screening Element



Pictured with base extension and pizza oven insert.
F1: BBQ / Outdoor Fireplace



F2: Recycled Timber Benches
450mmx450mm



F3: Outdoor Table and Chair Set



ST1: Stone Cladding Steps



S2: Timber Edge Around Steps



Acer palmatum



Eucalyptus mannifera 'Little Spotty'



Eucalyptus pulverulenta 'Baby Blue'



Lagerstroemia indica 'Natchez'

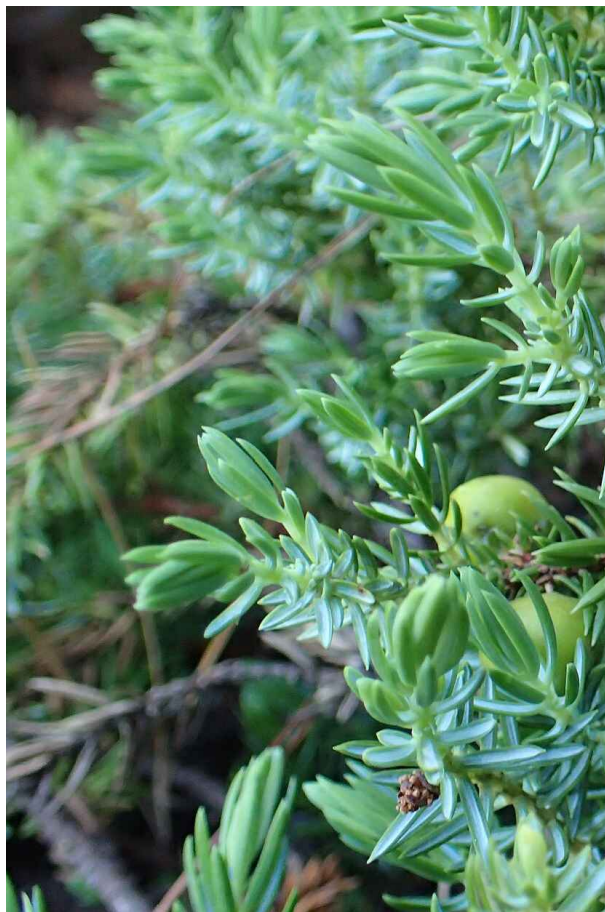


Groundcover, Native + Exotic, Massed

Casuarina glauca 'Cousin It'



Dichondra repens



Juniperus taxifolia 'Lutchuensis'



Myoporum parvifolium



Shrubs, Native, Massed

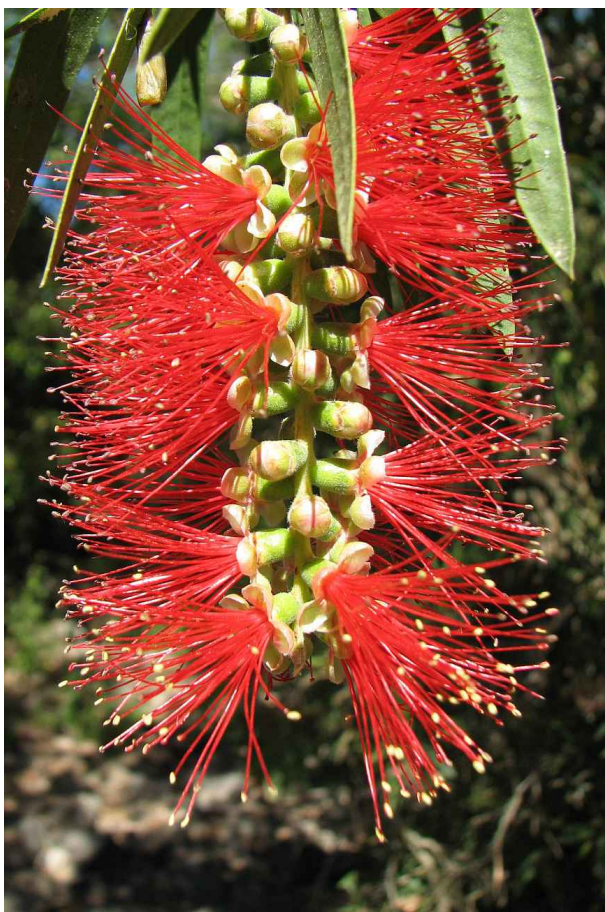
Acacia cognata 'Limelight'



Banksia spinulosa 'Honey Pots'



Correa alba



Callistemon 'Little John'



Grevillea rosemarinifolia



Accent

Anigozanthos 'Bush Ballad'



Chrysocephalum apiculatum



Indigofera decora



Dianella revoluta



Pittosporum 'Miss Muffet'

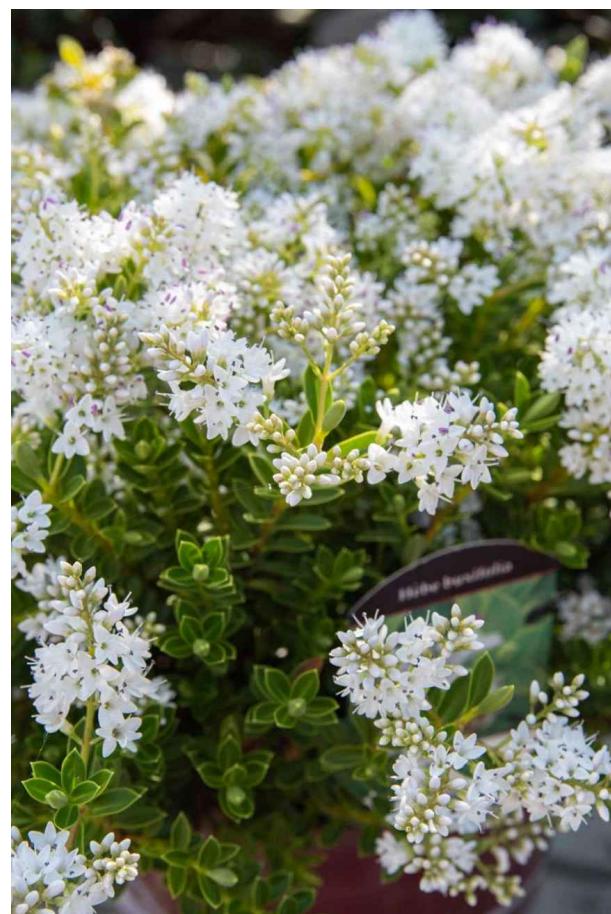


Low Shrubs and Groundcover, Native + Exotic Massed

Alyxia buxifolia



Coprosma kirkii



Hebe buxifolia



Leucopogon parviflorus



Rosemarinus prostratus



Westringia 'Aussie Box'

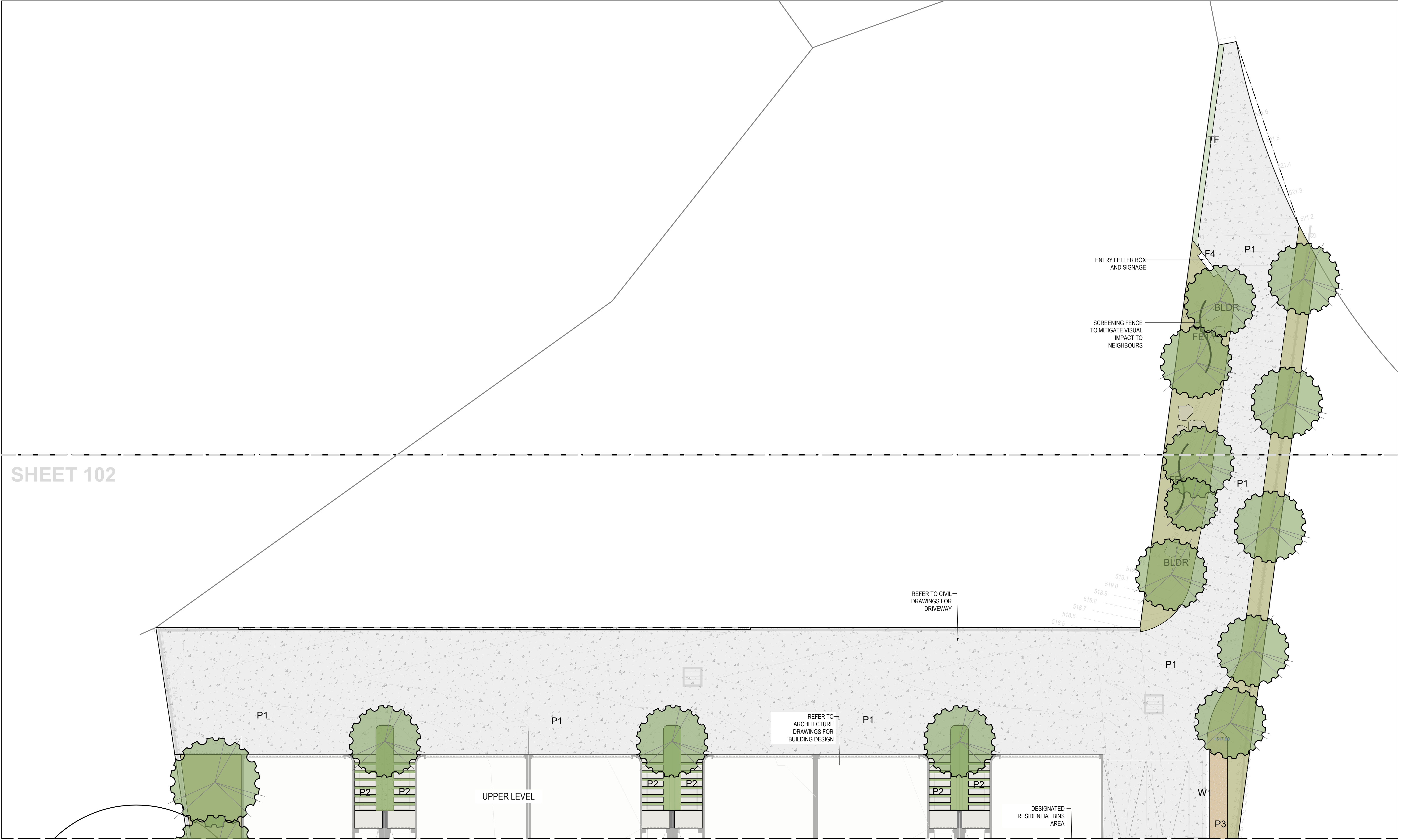
7 Hanley Place Yass Planting Schedule (1837)							
CODE	BOTANIC NAME	COMMON NAME	MATURE SIZE (h x w) (m)	SPACING	DISTRIBUTION	PROPOSED POT SIZE	QUANTITY
Trees							
Ap	<i>Acer palmatum</i>	Japanese Maple	4m x 4m		As Shown	100L	6
Em	<i>Eucalyptus mannifera</i> 'Little Spotty'	Dwarf Red Spotted Gum	5m x 5m		As Shown	100L	2
Ep	<i>Eucalyptus pulverulenta</i> 'Baby Blue'	Silver-Leaved Mountain Gum	6m x 3m		As Shown	100L	4
Li	<i>Lagerstroemia indica</i> 'Natchez'	Crepe Myrtle	6m x 4m		As Shown	100L	6
							18
Planting Type 1: Groundcover, Native + Exotic, Massed							Total PL1 Area: 20
Da	<i>Dichondra Argentea</i> 'Silver Falls'	Silver Falls	0.10m x 1.5m	6	20%	140MM	24
Dr	<i>Dichondra repens</i>	Kidneyweed	0.2m x 1.5m	7	20%	140MM	29
Jl	<i>Juniperus taxifolia</i> 'Lutchuensis'	Lutchuensis Juniper	0.25m x 3m	4	20%	140MM	16
Rp	<i>Rosemary officinalis prostrate</i>	Rosemary	0.5m x 2m	4	20%	140MM	16
Tj	<i>Trachelospermum jasminoides</i>	Star Jasmine	0.4m x 4m	5	20%	140MM	20
					100%		
Planting Type 2: Shrubs, Native, Massed							Total PL2 Area: 68
Ac	<i>Acacia cognata</i> 'Limelight'	River Wattle	2m x 1m	2	5%	140MM	7
An	<i>Anigozanthos</i>	Bush Ballad	3m x 2m	4	5%	200MM	14
Bs	<i>Banksia spinulosa</i> 'Honey Pots'	Dwarf Banksia	1m x 1.5m	2	5%	200MM	7
Ca	<i>Correa alba</i>	White Correa	1.5m x 1.5m	3	7%	200MM	14
Cap	<i>Carex aprpressa</i>	Tall Sedge	1m x 1.5m	4	5%	200MM	14
Cd	<i>Correa decumbens</i>	Spreading Correa	0.5m x 2m	4	5%	200MM	14
Cl	<i>Callistemon</i> 'Little John'	Dwarf Bottlebrush	1m x 1m	2	5%	200MM	7
Dr	<i>Dianella revoluta</i>	Blue Flax Lily	1m x 1.5m	3	5%	200MM	10
Gr	<i>Grevillea rosemarinifolia</i>	Scarlet Sprite	1.5m x 2.4m	2	5%	200MM	7
Gfw	<i>Grevillea</i> 'Fireworks'	Dwarf Spider Flower	1m x 1m	3	5%	200MM	10
Hv	<i>Hardenbergia violacea</i>	Purple Coral Pea	0.5m x 2m	4	7%	200MM	19
Lt	<i>Lomandra</i> 'Tanika'	Mat Rush	0.6m x 0.6m	7	7%	200MM	33
Mi	<i>Melaleuca Incana</i> Nana	Dwarf Grey Honey Myrtle	1.5m x 1.5m	3	7%	200MM	14
Pa	<i>Pennisetum alopecuroides</i> 'Pennstripe'	Swamp Fountain Grass	0.4m x 0.4m	6	7%	200MM	28
Pp	<i>Poa poiformis</i> 'Kingsdale'	Tussock Grass	0.5m x 0.5m	6	7%	200MM	28
Pm	<i>Philotheca myoporoides</i>	Short-leaf Wax Flower	1m x 1m	3	6%	200MM	12
Wf	<i>Westringia fruticosa</i>	Coastal Rosemary	2m x 2m	3	7%	200MM	14
					100%		
Planting Type 3: Accent							Total PL3 Area: 166
Ab	<i>Anigozanthos</i> 'Bush Ballad'	Kangaroo Paw	0.8m x 0.5m	3	10%	200MM	50
Cap	<i>Chrysocephalum apiculatum</i>	Yellow Buttons	0.5m x 1m	5	15%	200MM	124
Cg	<i>Casuarina glauca</i> 'Cousin It'	Prostrate Sheoak	0.4m x 1.5m	3	5%	200MM	25
Ck	<i>Coprosma kirkii</i>	Kirk's Coprosma	1.5m x 2m	2	5%	140MM	17
Di	<i>Dichondra</i> 'Silver Falls'	Silver Falls	0.2m x 0.2m	5	15%	140MM	124
Dr	<i>Dianella revoluta</i>	Blue Flax Lily	1m x 1.5m	2	5%	200MM	17
Gl	<i>Grevillea lanigera</i> 'Mt Tamboritha'	Prostrate Spider Flower	0.4m x 1.5m	2	5%	200MM	17
Id	<i>Indigofera decora</i>	Bush Wisteria	0.6m x 0.9m	3	11%	200MM	55
Lp	<i>Leucopogon parviflorus</i>	Coast Beard-heath	1.5 x 1	2	11%	200MM	36
Pmi	<i>Pittosporum</i> 'Miss Muffet'	Dwarf Pittosporum	1m x 2m	2	6%	200MM	20
Pp	<i>Poa poiformis</i> 'Kingsdale'	Tussock Grass	0.5 x 0.5	3	12%	200MM	60
					100%		
Planting Type 4: Low Shrubs and Groundcover, Native + Exotic Massed							Total PL4 Area: 64
Abu	<i>Alyxia buxifolia</i>	Sea Box	2m x 2m	3	6%	200MM	12
Ca	<i>Correa alba</i>	White Correa	1.5m x 1.5m	3	7%	200MM	13
Ck	<i>Coprosma kirkii</i>	Kirk's Coprosma	1.5m x 2m	3	5%	140MM	10
Di	<i>Dichondra</i> 'Silver Falls'	Silver Falls	0.2 x 0.2	6	10%	140MM	39
Dr	<i>Dianella revoluta</i>	Blue Flax Lily	1 x 1.5	3	7%	200MM	13
Gl	<i>Grevillea lanigera</i> 'Mt Tamboritha'	Prostrate Spider Flower	0.4m x 1.5m	4	5%	200MM	13
Hb	<i>Hebe buxifolia</i>	Box-leaf Hebe	0.7m x 0.5m	4	5%	200MM	13
Lp	<i>Leucopogon parviflorus</i>	Coast Beard-heath	1.5 x 1	3	7%	200MM	13
Mp	<i>Myoporum parvifolium</i>	Creeping Boobialla	0.2 x 0.3	3	10%	140MM	19
Pmi	<i>Pittosporum</i> 'Miss Muffet'	Dwarf Pittosporum	1m x 2m	3	10%	200MM	19
Rp	<i>Rosemarinus prostratus</i>	Creeping Rosemary	0.2 x 0.5	5	10%	140MM	32
Tj	<i>Trachelospermum jasminoides</i>	Star Jasmine	0.4m x 4m	5	8%	140MM	26
Wa	<i>Westringia</i> 'Aussie Box'	Dwarf Coastal Rosemary	0.5m x 1m	4	10%	200MM	26
					100%		



7 Hanley Pl, Yass (1837) NSW 2582
DEVELOPMENT APPLICATION

PREPARED BY	CYRUS RADMEHR	DATE	03/03/2025
CLIENT	BRENDAN PRICE	SCALE	
ARCHITECT	SN ARCHITECTS	ISSUE	B

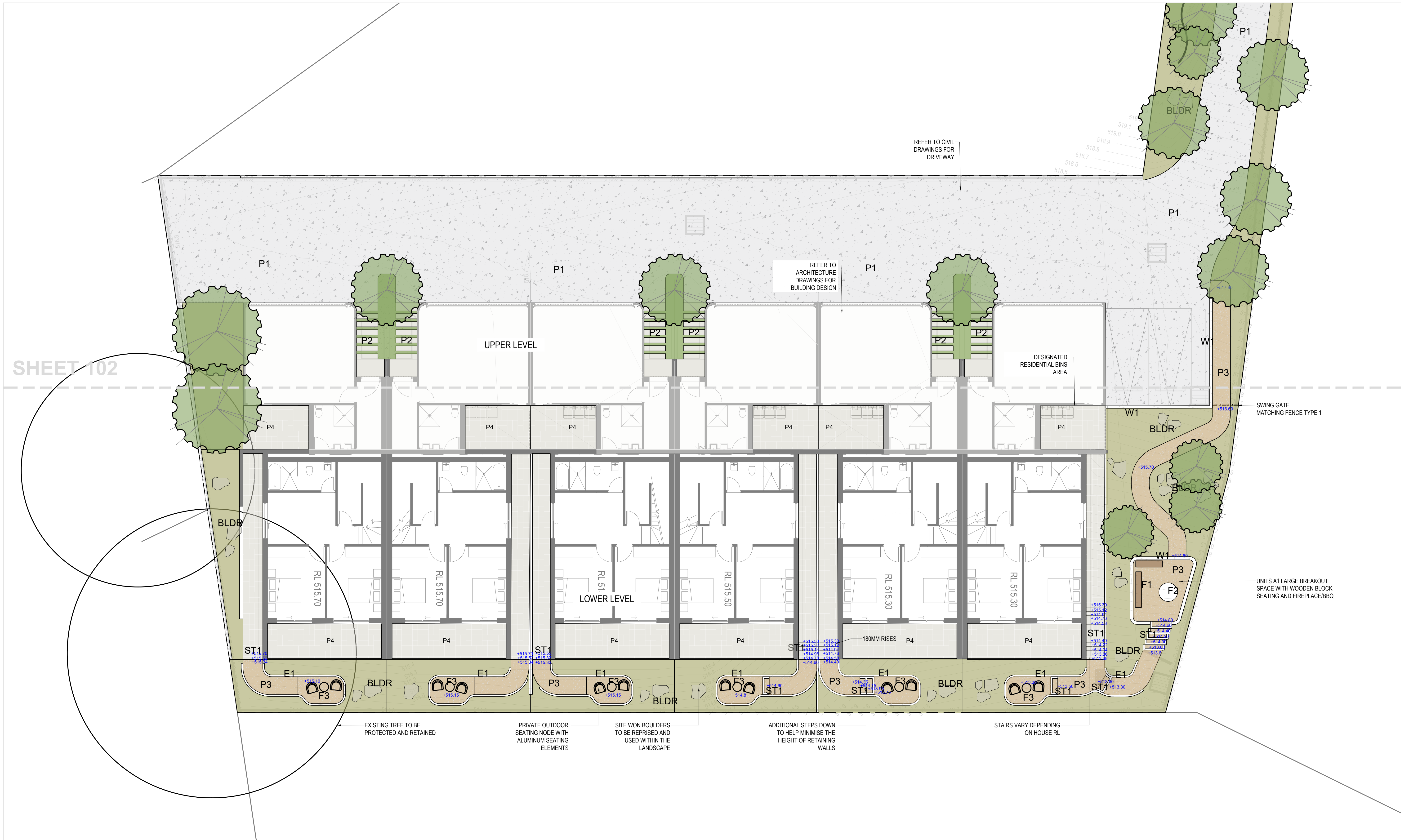
Copyright is retained by Merdasstone Pty Ltd. Use only the specified dimensions; any additional measurements must be confirmed and provided by the landscape architect. Report any discrepancies to the project manager and Merdasstone Pty Ltd before commencing construction. Ensure adherence to the Building Code of Australia and all applicable Australian Standards and regulatory requirements.



7 Hanley Pl, Yass (1837) NSW 2582
DEVELOPMENT APPLICATION

PREPARED BY	CYRUS RADMEHR	DATE	03/03/2025
CLIENT	BRENDAN PRICE	SCALE	1:250@A1
ARCHITECT	SN ARCHITECTS	ISSUE	B

Copyright is retained by Merdasstone Pty Ltd. Use only the specified dimensions; any additional measurements must be confirmed and provided by the landscape architect. Report any discrepancies to the project manager and Merdasstone Pty Ltd before commencing construction. Ensure adherence to the Building Code of Australia and all applicable Australian Standards and regulatory requirements.

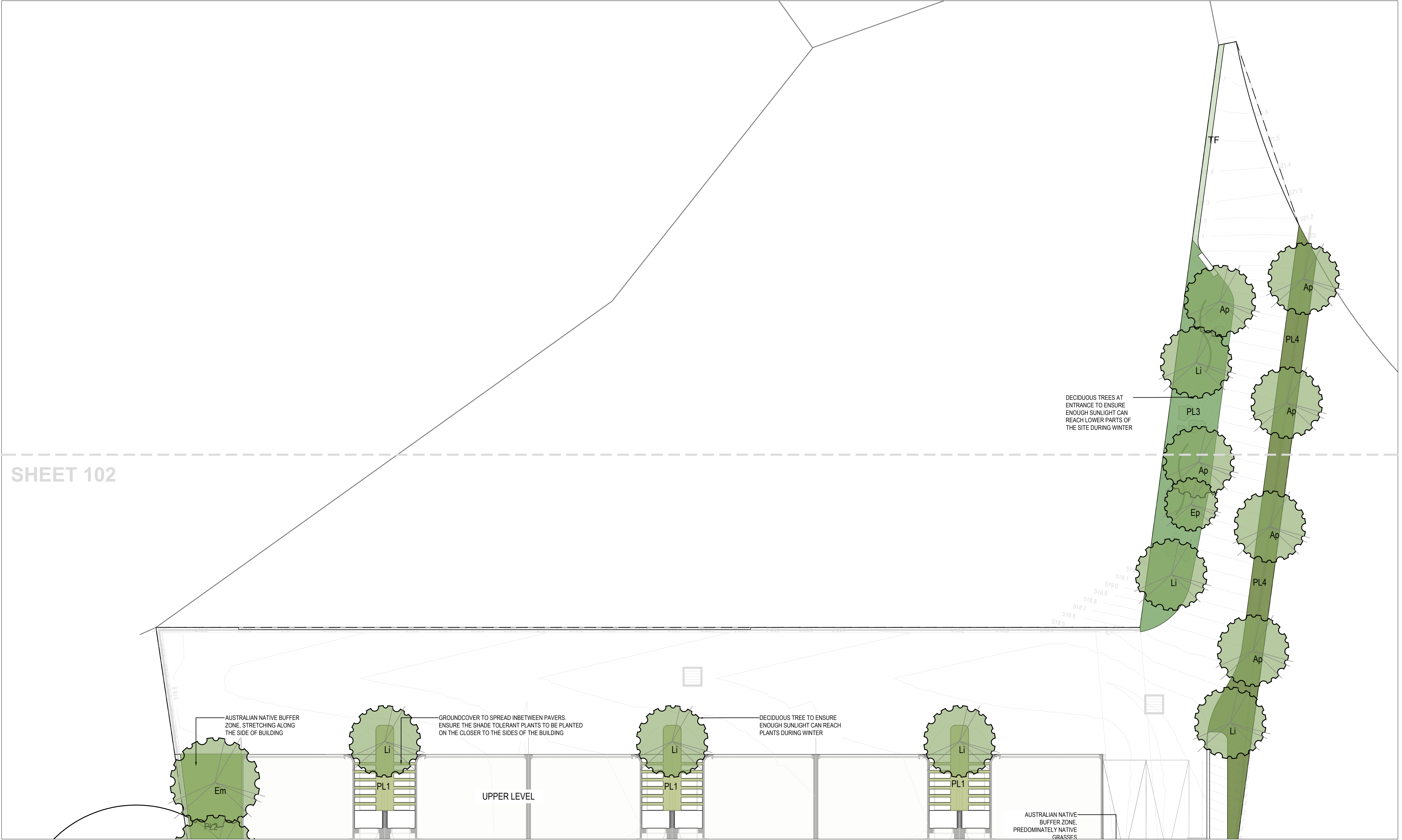


7 Hanley Pl, Yass (1837) NSW 2582
DEVELOPMENT APPLICATION

PREPARED BY	CYRUS RADMEHR
CLIENT	BRENDAN PRICE
ARCHITECT	SN ARCHITECTS

DATE 03/03/2025
SCALE 1:250@A1
ISSUE B

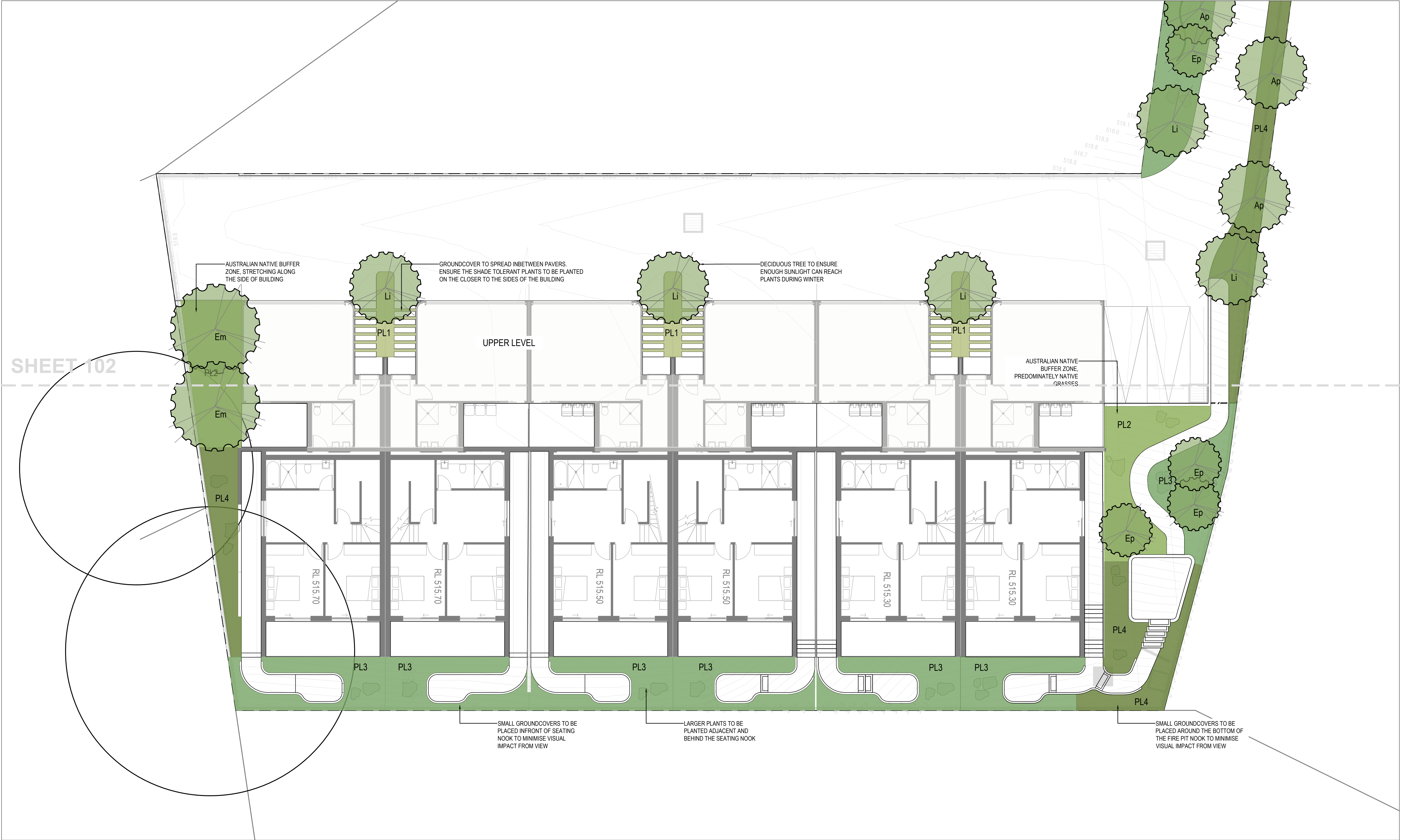
Copyright is retained by Merdasstone Pty Ltd. Use only the specified dimensions; any additional measurements must be confirmed and provided by the landscape architect. Report any discrepancies to the project manager and Merdasstone Pty Ltd before commencing construction. Ensure adherence to the Building Code of Australia and all applicable Australian Standards and regulatory requirements.



7 Hanley Pl, Yass (1837) NSW 2582
DEVELOPMENT APPLICATION

PREPARED BY	CYRUS RADMEHR	DATE	03/03/2025
CLIENT	BRENDAN PRICE	SCALE	1:250@A1
ARCHITECT	SN ARCHITECTS	ISSUE	B

Copyright is retained by Merdasstone Pty Ltd. Use only the specified dimensions; any additional measurements must be confirmed and provided by the landscape architect. Report any discrepancies to the project manager and Merdasstone Pty Ltd before commencing construction. Ensure adherence to the Building Code of Australia and all applicable Australian Standards and regulatory requirements.



7 Hanley Pl, Yass (1837) NSW 2582
DEVELOPMENT APPLICATION

PREPARED BY CYRUS RADMEHR
CLIENT BRENDAN PRICE
ARCHITECT SN ARCHITECTS

DATE 03/03/2025
SCALE 1:250@A1
ISSUE B

Copyright is retained by Merdasstone Pty Ltd. Use only the specified dimensions; any additional measurements must be confirmed and provided by the landscape architect. Report any discrepancies to the project manager and Merdasstone Pty Ltd before commencing construction. Ensure adherence to the Building Code of Australia and all applicable Australian Standards and regulatory requirements.

